

Performance Table

Unit	Item	J35AD					
		15H			30H		
	Screw cylinder type	K	A	B	K	A	B
	Screw diameter mm	16	18	20	20	22	25
	Screw stroke mm	60			80		
	Theoretical injection capacity cm ³	12	15	18	25	30	39
	Injection capacity (GP-PS) g	11	14	17	23	28	38
Standard	Injection pressure(Max.) MPa {kgf/cm ² }	276 {2810}	218 {2220}	177 {1800}	270 {2750}	223 {2270}	172 {1750}
	Holding pressure(Max.) MPa {kgf/cm ² }	251 {2560}	198 {2010}	161 {1640}	245 {2490}	203 {2070}	157 {1600}
	Injection speed mm/s	350			350		
	Injection rate cm ³ /s	70	89	110	110	133	172
	Plasticizing rate (GP-PS) kg/h	10	14	17	17	21	28
	Screw speed min ⁻¹	500			500		
Injection Unit	High speed (HS)						
	Injection pressure(Max.) MPa {kgf/cm ² }	276 {2810}	218 {2220}	177 {1800}	270 {2750}	223 {2270}	172 {1750}
	Holding pressure(Max.) MPa {kgf/cm ² }	251 {2560}	198 {2010}	161 {1640}	245 {2490}	203 {2070}	157 {1600}
	Injection speed mm/s	550			550		
	Injection rate cm ³ /s	111	140	173	173	209	270
	Plasticizing rate (GP-PS) kg/h	10	14	17	17	21	28
	Screw speed min ⁻¹	500			500		
Ultra speed (US)	Injection pressure(Max.) MPa {kgf/cm ² }	276 {2810}	218 {2220}	177 {1800}	270 {2750}	223 {2270}	172 {1750}
	Holding pressure(Max.) MPa {kgf/cm ² }	251 {2560}	198 {2010}	161 {1640}	245 {2490}	203 {2070}	157 {1600}
	Injection speed mm/s	800			800		
	Injection rate cm ³ /s	161	204	251	251	304	393
	Plasticizing rate (GP-PS) kg/h	10	14	17	17	21	28
	Screw speed min ⁻¹	500			500		
	Nozzle touch force kN {tf}	9.9 {1.0}			14.8 {1.5}		
	Nozzle stroke from platen mm	50					
	Type of nozzle	Open nozzle					
	Cylinder temperature control	Cylinder 3 / Nozzle 2					
	Heater wattage kW	3.1			3.9		
Clamping Unit	Mechanism	Double toggle					
	Clamping force kN {tf}	344 {35}					
	Daylight opening (Max.) mm	560					
	Opening stroke (Max.) mm	230					
	Mold height mm	150~330					
	Distance between tie-bars (H×V) mm	310×290					
	Platen size (H×V) mm	450×430					
	Ejector point	3 points					
	Ejector force kN {tf}	9.9 {1.0}					
Ejector stroke mm	50						
General	Machine weight t	2.5			2.6		
	Machine dimensions (L×W×H) m	3.21×1.01×1.58			3.23×1.01×1.58		

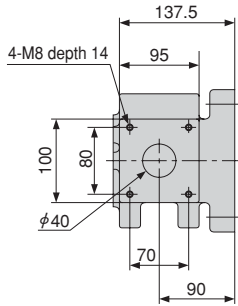
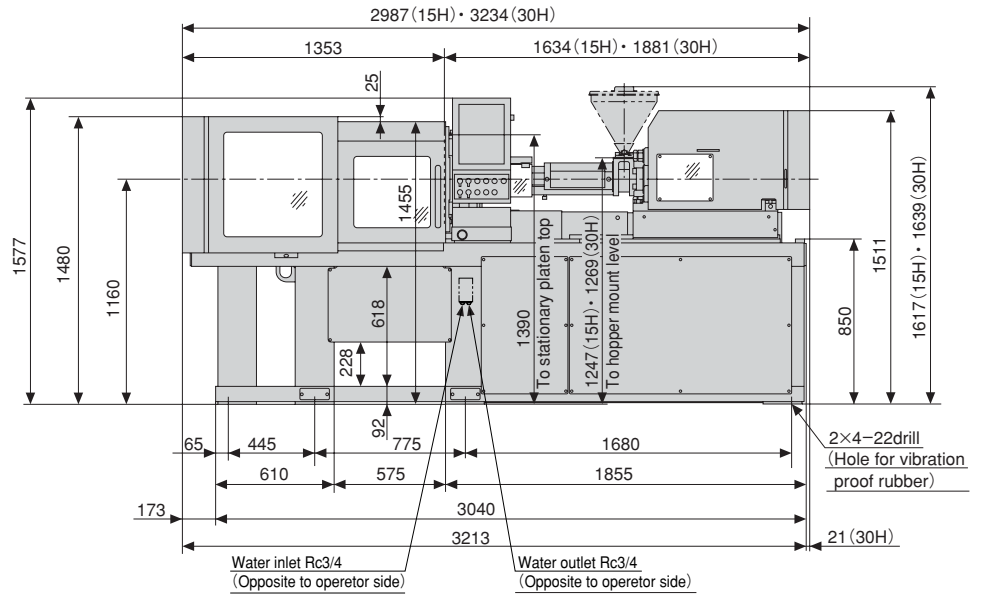
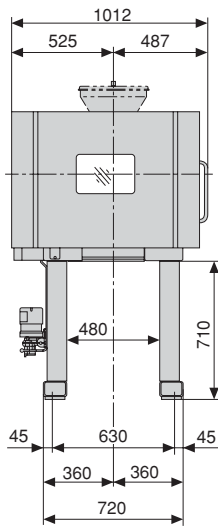
Remarks:

1. Maximum injection pressure and maximum holding pressure may be restricted due to molding condition.
2. The theoretical injection capacity is (cross sectional area of cylinder) × (stroke of screw).
3. The injection capacity is applicable for GP-PS and variable according to the grade of resin, molding conditions and mold.
4. The plasticizing rate is applicable for GP-PS.
5. PC, HPVC, other engineering plastic, etc., low temperature setting and high speed molding may require a high torque depending on the grade or molding conditions. Please contact us if you plan.

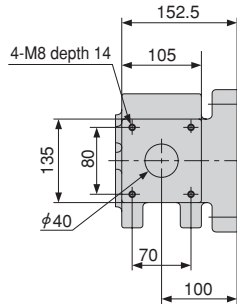
Note:

1. Due to continual improvements, specifications are subject to change without notice.
2. Actual figures of the specification will vary depending on final machine configuration. Please contact us if you require more specific data.
3. Performance specifications are based on theoretical data.
4. High speed injection and Ultra speed injection are optional.
5. 1MPa=10.2 kgf/cm², 1kN=0.102tf

Equipment Dimensions and Mold Related Dimensions

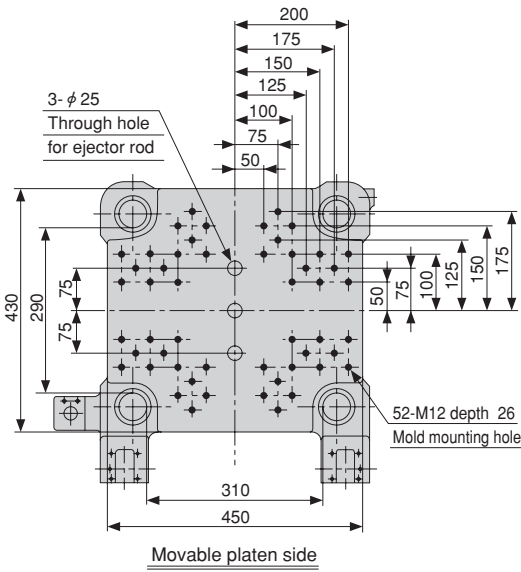
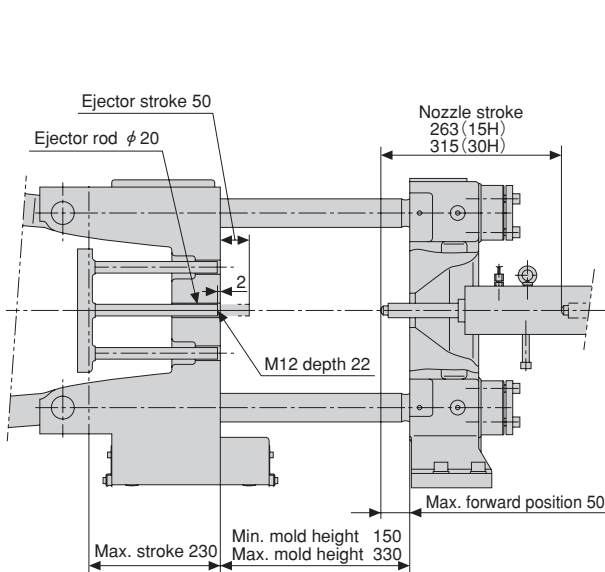
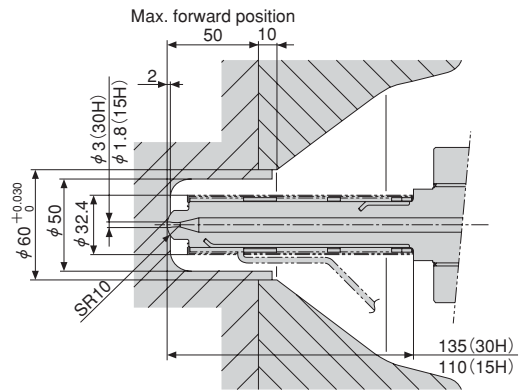


15H

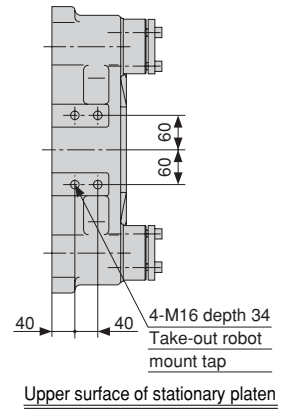


30H

Hopper mount



Movable platen side



Upper surface of stationary platen