

Heartful Technology

Yushin



HOP SERIES

HOP IV

HOP III - G

TWINHOP - G

YUSHIN PRECISION EQUIPMENT CO.,LTD.

HOPⅣ-450/550

High speed 3 axis pneumatic sprue pickers
for horizontal molding machines from 30-100 tons

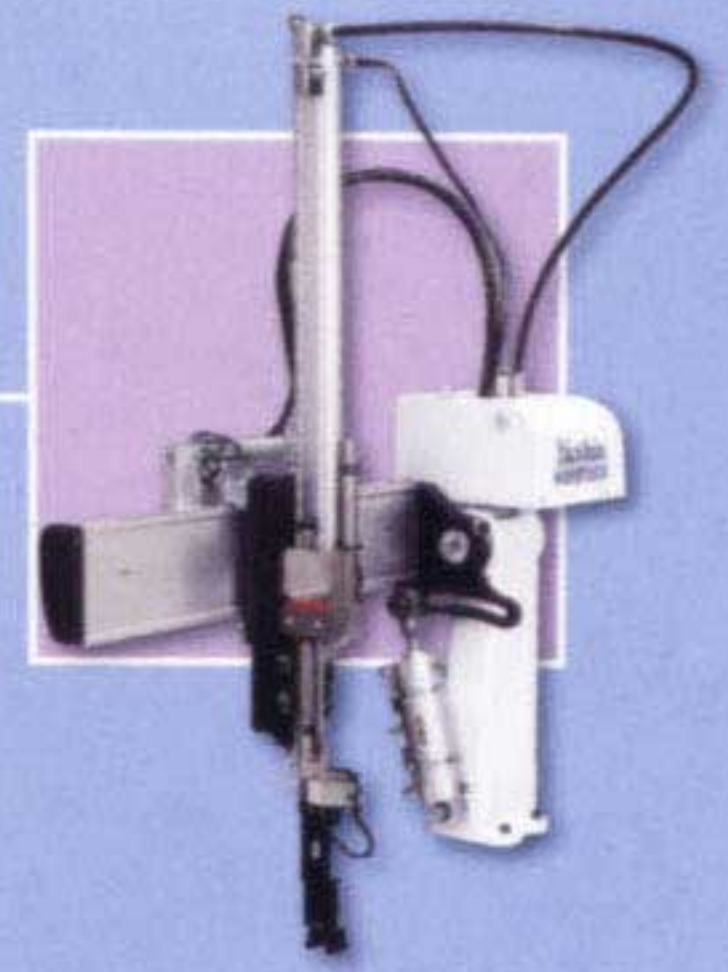
HOPⅡ-G 450~900

3 axis pneumatic sprue pickers
for horizontal molding machines from 30-350 tons

TWINHOP-G 450/550

3 axis pneumatic sprue and product pickers
for horizontal molding machines from 30-100 tons

HOP SERIES



HOPseries G controller

- Multilingual display selection(optional)
- Adoption of backlight plate for clear display
- Easy operation by LCD
- Light-weight Hand-held-controller
- Improvement in safety
- Production count memory
- Stores up to 15 mold set ups





HOP IV-550X

High speed 3 axis pneumatic sprue pickers
for horizontal molding machines from 30-100 tons

HOP IV - 450/550

We developed "HOP IV" series robots to meet customers' increasing demand for high-speed molding that ensures more productivity. The low resistance Yushin linear rail, lightened frames and reinforced rigidity accomplish high-speed operation.

High-speed product extraction

HOP IV-550 compared with HOP III-550

Take-out dry cycle reduced by 20 %

Overall dry cycle reduced by 12.5 % ※Under the optimum dry cycle measurement condition.

Reduction of running cost

This robot consumes approximately 30% less air compared with HOP III series robots and therefore reduces the running cost.

Yushin linear rail

HOP series G controller

Standard specification

Power source
AC200V 0.25A (50/60Hz)

Control method
Sequence stored program

Air Pressure
0.4~0.5MPa

Max. Air Pressure
0.8MPa

Model	HOP IV-450	HOP IV-550
-------	------------	------------

Stroke		
Vertical(mm)	450	550
Kick(mm)	100	
Swing	Min.50°~ Max.90°	

Chuck position(mm)
Waiting position adjustable 150

Air consumption (ℓ (normal)/cycle)		
	7	8

Max. payload(*)
2kg

* Max. payload is included the weight of chuck and or EOAT
X-type is also available.



HOP III-G 550X

3 axis pneumatic sprue pickers
for horizontal molding machines from 30-350 tons

HOP III-G 450~900

The HOP III-G is the product of many years of research, development, and experience with sprue picker robots.

The kick axis of the HOP III-G utilizes a low resistance Yushin linear rail. The Yushin linear rail has been proven effective through wide use in our robots over several years. The Yushin linear rails allow the HOP III-G to achieve stable high-speed motion and a virtually maintenance free design. With over 40,000 units sold worldwide the reliability of the HOP III-G robot is proven.

Yushin linear rail

HOP series G controller

Standard specification

Power source

AC200V 0.25A (50/60Hz)

Control method

Sequence stored program

Air Pressure

0.4~0.5MPa

Max. Air Pressure

0.8MPa

Model	HOP III - G 450	HOP III - G 550	HOP III - G 650	HOP III - G 750	HOP III - G 900
-------	--------------------	--------------------	--------------------	--------------------	--------------------

Stroke

	HOP III - G 450	HOP III - G 550	HOP III - G 650	HOP III - G 750	HOP III - G 900
Vertical(mm)	450	550	650	750	900
Kick(mm)	90		150		
Swing	Min.50° ~ Max.90°				

Chuck position(mm)

Waiting position adjustable 100

Air consumption (ℓ (normal)/cycle)

	10	11	17	19	21
--	----	----	----	----	----

Max. payload(*)

2kg

Robot weight(kg)

	26	27	28	30	31
--	----	----	----	----	----

* Max. payload is included the weight of chuck and or EOAT
X-, XC-, and XN-Types are also available.



TWINHOP-G 550

3 plate mold capability

End of arm tool mounting capability

Wrist/vacuum/adjustable end of arm tool are standard

Yushin linear rail

HOP series G controller

3 axis pneumatic sprue and product pickers for horizontal molding machines from 30-100 tons

TWINHOP-G 450/550

In addition to being a sprue picker, the TWINHOP-G has both a main arm and a sub arm and supports 3 plate molds. The TWINHOP-G is provided standard with an adjustable 4 cup end-of-arm tool, wrist, vacuum circuit, and is capable of taking out products using suction.

Standard specification

Power source
AC200V 0.25A (50/60Hz)

Control method
Sequence stored program

Air Pressure
0.4~0.5MPa

Max. Air Pressure
0.8MPa

Model	TWINHOP-G 450	TWINHOP-G 550
-------	---------------	---------------

Stroke		
Vertical(mm)	450	550
Kick(mm)	90	
Swing	Min.50°~ Max.90°	

Chuck position(mm)
Waiting position adjustable 100

Air consumption (ℓ (normal)/cycle)		
	16	18

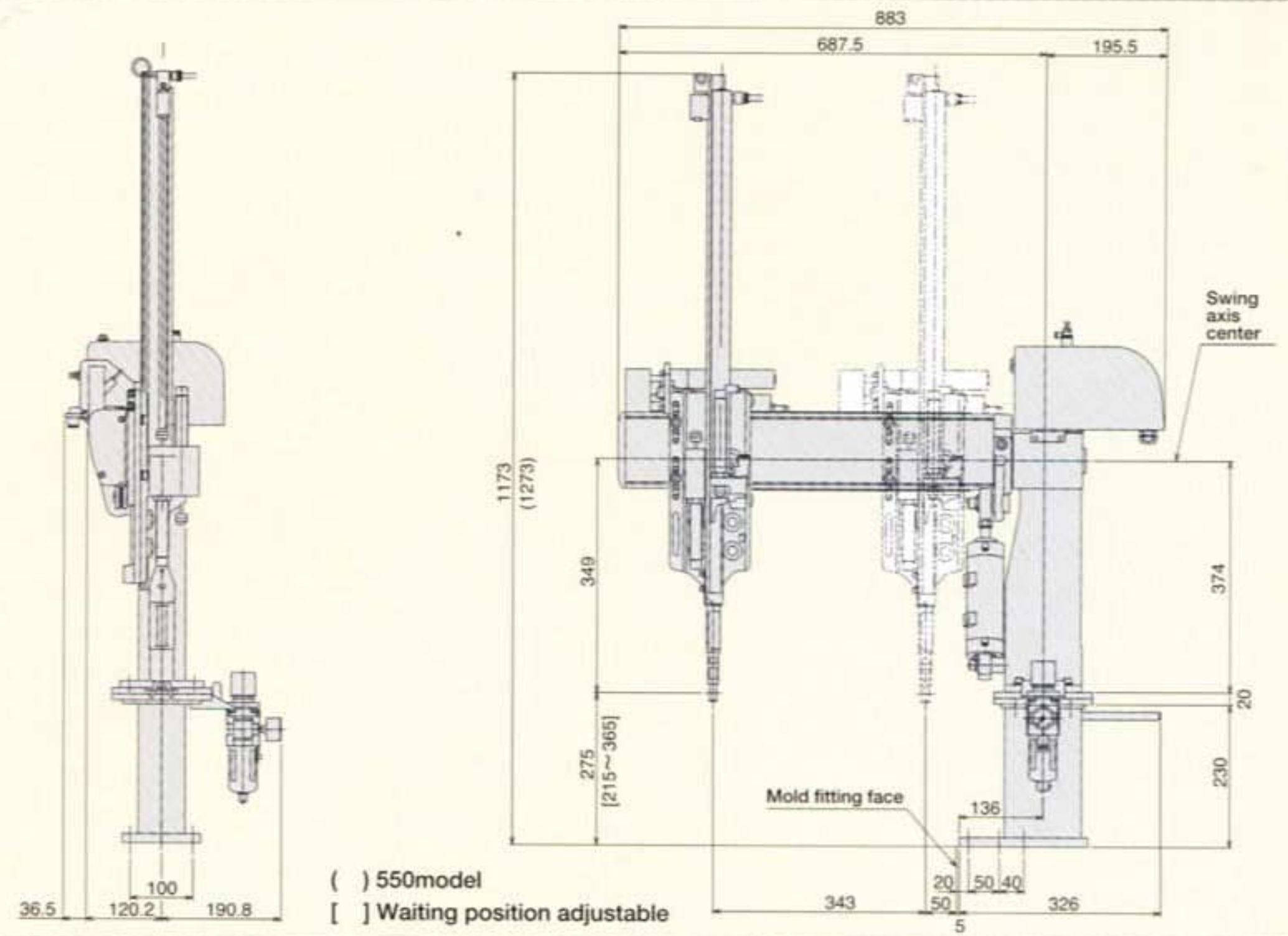
Max. payload(*)
2kg

Robot weight(kg)		
	47	48

* Max. payload is included the weight of chuck and or EOAT

Dimensions (mm)

HOP II- 450 /550

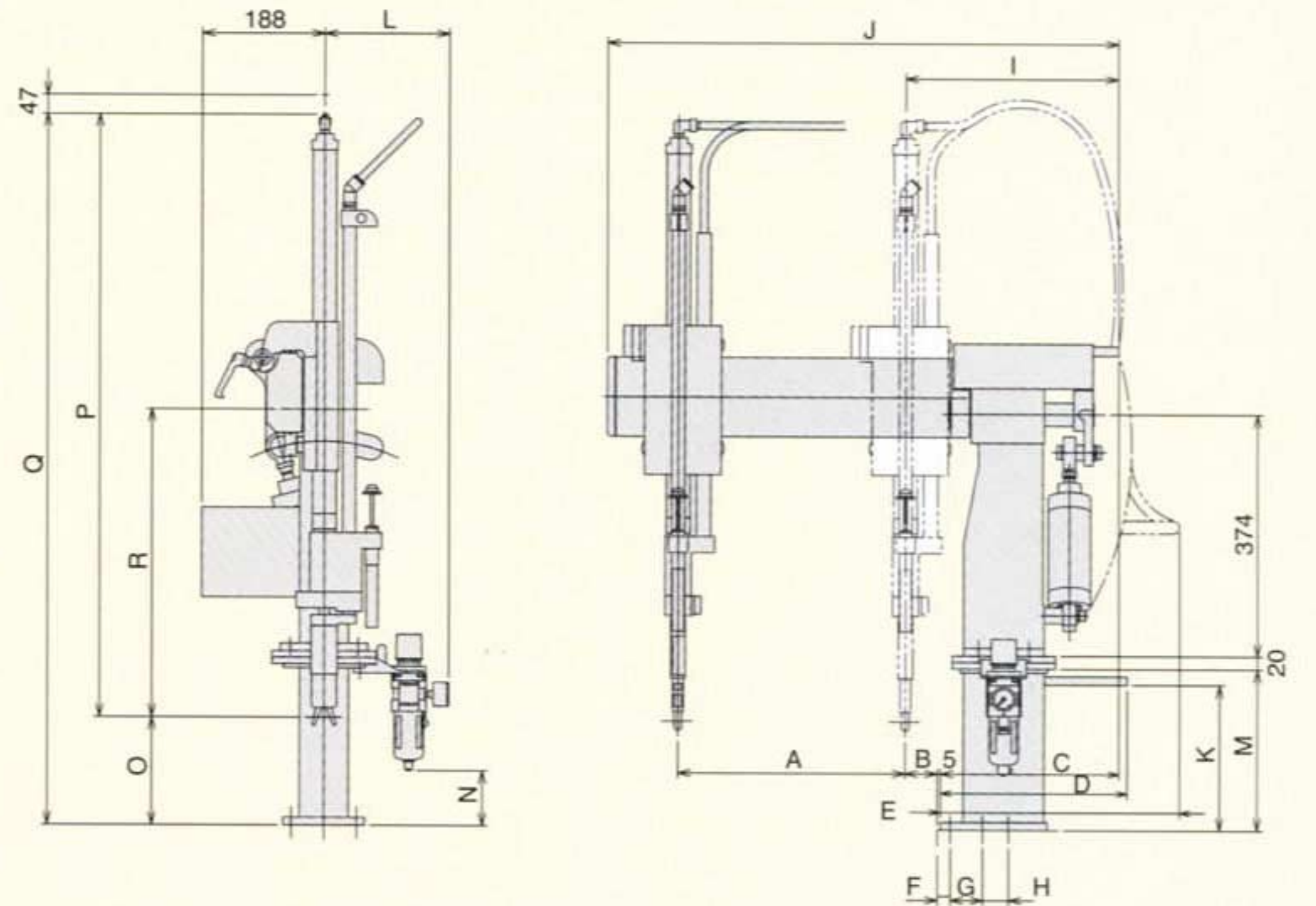


HOP II-G 450 ~900

Model	A	B	C	D	E	F	G	H	I	J
HOP II-G 450										
HOP II-G 550	350	50	276	289	370	20	50	40	331	797
HOP II-G 650										
HOP II-G 750	530	140	306	302	400	25	60	60	451	1096
HOP II-G 900										

Model	K	L	M	N	O	P	Q	R
HOP II-G 450						917(959)	1084(1184)	
HOP II-G 550	226 (326)	191	250 (350)	85 (185)	167 (225)	1017(1059)	1184(1284)	
HOP II-G 650						1117(1159)	1284(1384)	477 (519)
HOP II-G 750	323 (423)	217	350 (450)	177 (277)	267 (325)	1217(1259)	1484(1584)	
HOP II-G 900						1367(1409)	1634(1734)	

※Dimensions in () are for the X(flip) type.



TWINHOP-G 450 /550

Model	A	B	C	D	E	F	G	H
TWINHOP-G 450	Min.85	44	129	25	60	60	546	325
TWINHOP-G 550		~285	~413					

Model	I	J	K	L	M	N	O	P	Q
TWINHOP-G 450	177	220	350	20	374	211	324	217	1200
TWINHOP-G 550									1300

